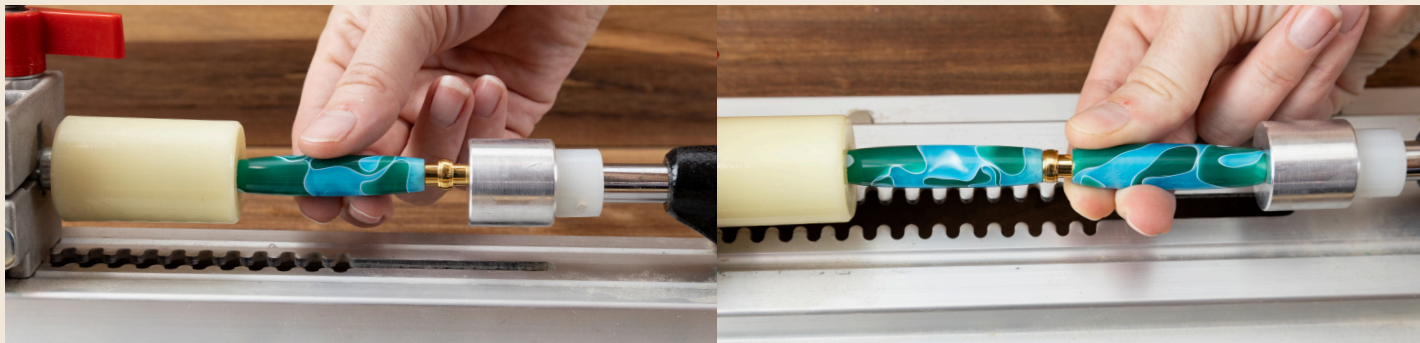


# Slimline Pencil Tips



**Make sure the barrels are straight when pressing them into the centerband.** The passage through the centerband is narrow, so even a slight angle can cause the mechanism to catch when passing it through. Do not put excess pressure on the button or try to force the mechanism through, as this can damage the mechanism. Realign the barrels so they are straight and reinsert the mechanism.



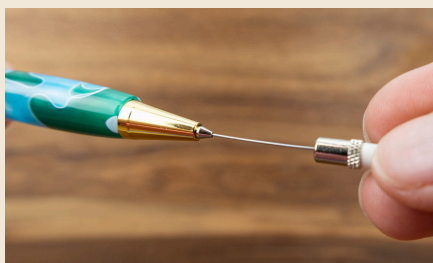
When installing the mechanism, **make sure the front of the mechanism seats properly into the silver insert** at the end of the lower barrel. If it's not seated fully, the mechanism won't extend out far enough for you to thread the tip on.



**Broken lead:** If the lead pushes back in when you're writing, the lead is probably broken. When the lead is too short, the mechanism can't grip it properly. Pull the broken lead out and click to advance the next one.



**Accessing the eraser and leads:** The eraser is accessed by pulling off the button cap. You can access the lead by pulling off the metal eraser cup.



**Clearing jammed lead:** The bottom of the eraser cup has a small wire that can be used to clear lead jams in the tip of the pencil. Gently push the wire through the front of the tip to clear out the lead.